

EFSA German Section

European Species and Line class Championship/ Langeland 2017



EFSA European Species Championship/ Langeland 2017

Welcome to Langeland!

It is now the fourth Langeland has been selected by EFSA for hosting a European Championship. Whilst the Langeland Belt and beaches on the East side of the island have regular visitors from Germany and Denmark, it is always an extraordinary privilege to host an event of such international class.

Langeland is one of the Islands of the Fyn region in Denmark. Being surrounded by the calmer climate of the Baltic Sea tourism plays a huge role. Apart from fishing there are plenty of opportunities to go sailing, hiking and bicycling. Ferries connect the Fyn islands with the rest of Denmark but also Germany and Sweden.

Sight seeing is concentrated on the island around Bagenkop in the South. Humble with the ancient grave of King Humble, Rudkøbing and Spodsbjerg in the middle up to Lohals in the North. The unusual lengthy shape gave the island its name (Langeland meaning the 'long land').

Flatfish will be the target for this competition. In the waters around Langeland late autumn is the most prolific time of the year for this kind of fishing. The main two species of flatfish caught will be flounder and dab. However, plaice and turbot might make an appearance too.

We are very proud for EFSA Germany for being selected as the hosts for this year's species championship and wish all competitors a successful and enjoyable time!

On behalf of EFSA Germany

Organising Committee



Thomas Reinhardt



Marcus Wuest

EFSA European Species Championship/ Langeland 2017

Date : 30.10.2017 to 02.11.2017

Location : Denmark / Langeland / Spodsbjerg

Headquarter will be Skudehavn, Rudkøbing

Organiser: EFSA Section Germany

Entry fee: EUR 300,-

Fishing Rules:

- Only flatfish score. 1 (one) point per flatfish caught unless length 40cm or above. Flatfish over 40cm or above score 10 points.
- We will be drifting, or the boat will be held in the current so it moves slower than the current, and thus giving the optimal drift for catching fish. We will fish from fishing boats with around 12 anglers/boat.
- Ragworm as bait will be supplied by the organizers, no other bait allowed other than artificial ones as per EFSA rules.
- Fishing license is obligatory and can be obtained from Angelcentrum Langeland.
- Max. 2 single hooks
- Underhand casting allowed with weights, bait and hooks outside the boat at all times.
- Fishing is catch- and release, scorecards will be given to all participants. Fishing captains on every boat to check bigger fish. If you want to keep the fish, you have to cut off the tail immediately (have to be above the legal minimum sizes for Denmark at the time).
- The angler with the most points over the 2 days wins (no % score). If anglers are equal on points the angler with the largest fish wins. If there is a draw still the higher number of fish will be taken into account.
- Undersized and protected fish need to be immediately and carefully released (see table at the end of the brochure)
- Only provided baits must be used.
- Open Pairs - EUR 10 per pair to be paid at registration Executive teams of 3 blind draw.
- Headquarter will be Skudehavn, Rudkøbing
- EFSA Uniform must be worn at Registration, Prize Giving
- Otherwise EFSA boat fishing rules apply
- Anglers above the age of 18 and below 65 require a fishing licence to fish in Danish waters. The costs are DKR 185 for a year or DKR 130 for a week. Anglers can obtain this from Angelcentrum Langeland. This is not covered by the entry fee.

Lineclass rules:

- Each competitor will receive a spool of Ande braided line (20lbs 300m).
- To fish for the Line class pin the braided line provided has to be used.
- Fishing captains/boat steward will check every morning if the line is being used and mark a sheet accordingly.
- Same fishing rules/point system as above applies for the Line class part of the competition.
- The winners of the Line class part of the competition will be awarded the prestigious Line class pins.

Recommended fishing tackle:

Rods of ca 3m in length

Lead weights of ca. 50 – 150gr

Hook size 2 to 1/0

Small beads on the hook length

Fixed spool or multiplier reel with 0.28mm to 0.35mm line

Paternoster or running trace

Entry fee includes:

- Opening ceremony
- Gala Dinner
- Trophies / Prizes
- Bait
- Two fishing trips on boats

Minimum sizes / points

Eligible fish are:

Turbot/Steinbutt



Brill/Glatthead

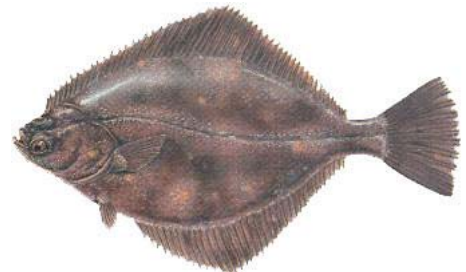
Dab / Kliesche



Plaice / Scholle

Flounder / Flunder

Sole / Seezunge



All other fish do not count

Points

Fishpoints:

Per fish 1 point

Per fish over 40 cm 10 points



European Species Championship 2017, Langeland, CLOSING DATE 30. MARCH 2017

1.) Angler details:

Surname and title..... First Name.....
 Address.....

 Section..... Membership No.....
 National Team.....

2.) Membership Class: Please mark all relevant boxes that apply:

Annual member Life member Lady Senior (65 and over) Junior (under 18)
 Juniors and Seniors; age at start of event to count.

3.) Non-fishing companions:

Surname and title..... First Name.....
 Surname and title..... First Name.....

4.) Entry costs:	Adult (€300)	Junior (€150)	Number	Sub-total
Species Championship
Number Non Fishing € 50 each
Optional training day € 50
Total amount due:			

5.) Account details:

Account name EFSA-Deutschland e.V., Detlef Herms, Sparkasse Altmark West
 Key reference: „Euro Species 2017“
 IBAN DE29 8105 5555 3003 0041 49
 BIC NOLADE21SAW
 Account number 300 300 41 49 – BLZ: 810 555 55
 Bank address Sparkasse Altmark West, Wallstraße 1, D - 29410 Salzwedel

All entry forms must be sent to your own Section Secretary by the date specified by your Section. Your Section Secretary is responsible for forwarding all entry forms and cleared payments prior to close of entries which are due prior to: 30 March 2017. The sender is responsible for all transmission charges imposed by the sending and receiving banks and this must be allowed for in any funds sent. Receipt of payments and entries received will be acknowledged to the relevant Section Secretary within one month of close of entries.

Section Secretaries only may send entry forms to:

Thomas Reinhardt at
 ANGELCENTRUM LANGELAND SPODSBJERG
 SPODSBJERGVEJ 301
 DK - 5900 RUDKØBING
 Tlf. 0045 625014 13
 e-mail: langeland@angelcentrum.dk

6.) I agree to be bound by the rules of the event and will not hold the Organizers or Federation responsible for any loss, damage or accident caused to myself, my companions or property during the event program.

Date:..... Signed:.....

Program & Information

Monday	October 30th
08.30	Optional training day (to be arranged separately)
17.00 - 19.00	Registration at Hotel Skudehavn, Skudehavnen 21, 5900 Rudkøbing, www.rudkobingskudehavn.dk
19.30	Official Opening Hotel Skudehavn, Rudkøbing
Tuesday	October 31st
08.00	Draw of fishing position on the boat and bait supply
08.30	Boats leave the harbor in Spodsbjerg
09.00 - 15.00	Fishing 6 hours from first “lines down”.
15.30	Boats are in latest at 15.45
20.00	Results of the day available at HQ
Wednesday	November 1st
08.00	Same program and times as Tuesday
Thursday	November 2nd
	Reserve day in case of bad weather
19.30	Gala Dinner and Prize Giving

Questions & Additional Information available

Thomas Reinhardt

ANGELCENTRUM LANGELAND

SPODSBJERG

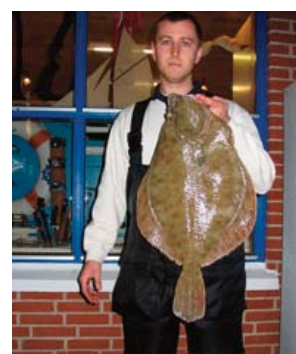
TELEFON: (0045) 62 50 14 13

SPODSBJERGVEJ 301

DK - 5900 RUDKØBING

E-Mail: langeland@angelcentrum.dk

www.angelcentrum.dk



Nr. 1
on Langeland
250 m²

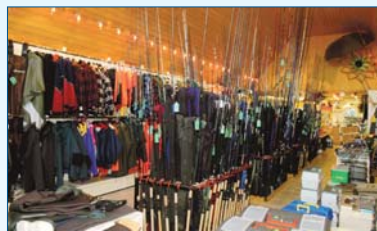
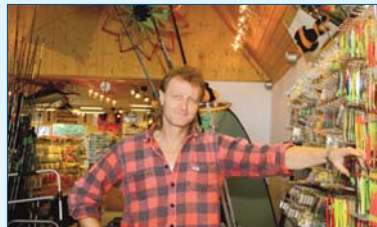


Nr. 1
auf Langeland
250 m²

IF YOU CARE ABOUT
GOOD SERVICE · GOOD ADVICE · HUGE SELECTION
LOW PRICES ...THEN VISIT US.

LEGEN SIE WERT AUF
GUTEN SERVICE · GUTE BERATUNG · GROÙE AUSWAHL
NIEDRIGE PREISE ... DANN KOMMEN SIE ZU UNS.

- Fishing tackle
- Charter boat trips
- Rental of small fishing boats and rods
- Daily fresh worms
- Fishing licences
- Arranging of accommodation
- 250 m² all about fishing
- Souvenirs



- Angelgeräte & Zubehör
- Kutterangeltouren
- Verleih von Angelbooten und Angelruten
- Tägl. frische Würmer
- Angelscheine
- Zimmervermietung
- 250 m² rund ums Angeln
- Souvenirs



ANGELCENTRUM LANGELAND

SPODSBJERGVEJ 301 · Tlf. + Fax 0045 62 50 14 13

Homepage: www.angelcentrum.dk - E-mail: langeland@angelcentrum.dk

300 m from Spodsbjerg harbour · 300 m vom Spodsbjerg Hafen

Boatrent on Langeland!



Boattype 1
Crescent 434
with 15 HP 4-stroke engine
Length 4,34 Meter
Width 1,72 Meter
Max. 3 persons

Boattype 6
Limbo 520
with 40 HP 4-stroke engine and
cabin - Echolot with GPS.
Length 5,20 Meter
Width 2,12 Meter
Max. 5 persons



Boattype 2
Crescent 465
with 30 HP 4-stroke engine and
Tax pulpit
Length 4,70 Meter
Width 1,80 Meter
Max. 4 persons

Boattype 7
Limbo 585
with 50 HP 4-stroke engine and
Tax pulpit - Echolot with GPS.
Length 5,85 Meter
Width 2,25 Meter
Max. 6 persons



Boattype 3
Crescent 499
with 40 HP 4-stroke engine and
Tax pulpit
Length 5,10 Meter
Width 1,95 Meter
Max. 5 persons

Boattype 8
Limbo 699
with 70 HP 4-stroke engine and
cabin - Echolot with GPS.
Length 6,99 Meter
Width 2,54 Meter
Max. 8 persons



Boattype 4
Crescent 550
with 40 HP 4-stroke engine and
Tax pulpit
Length 5,60 Meter
Width 2,10 Meter
Max. 6 persons

Boattype 9
Limbo 699
with 70 HP 4-stroke engine and
Tax house/Standing height
2 Meter - Echolot with GPS.
Length 6,99 Meter
Width 2,54 Meter
Max. 8 persons



Boattype 5
Limbo 585
with 50 HP 4-stroke engine and
cabin
Length 5,85 Meter
Width 2,25 Meter
Max. 6 persons

Boattype 10
Uttern 560
with 40 HP 4-stroke engine and
cabin
Length 5,62 Meter
Width 2,05 Meter
Max. 4 persons



**HOUSES
FOR RENT**



IBI BOOTSVERLEIH

v/ Nikolaj Østa · Phone 0045 6220 7120 · Fax 0045 6220 7121 · www.bootsverleih.dk



Fishing Holiday on Langeland

- a holiday for the whole family

www.langeland.dk

Langeland Touristoffice +45 62 51 35 05



Spodsbjerg harbour



Welcome to Spodsbjerg harbour

Our tourist bost harbour which has 130 berths offers our sailing guests some of the best conditions that can be found where Denmark is at its most delightfull.

In addition to yachtsmen the harbour also appeals to anglers since it is located in some of Denmark's best angling waters. Fishing and Spodsbjerg harbor are naturally connected. Therefore you find more firm's for boat rental and cutter for deep-sea fishing in Spodsbjerg.

We hope that you will make yourselves at home and enjoy the facilities that have been made available for our guests.

We wish you a plessant stay in the only harbour of the eastcoast of the island Langeland



Hotel Rudkøbing Skudehavn

Skudehavnen 21

5900 Rudkøbing

Phone: +45 62514600

www.rudkobingskudehavn.dk - info@rudkobingskudehavn.dk

Self-catering apartment, sleeps 6 persons

7 nights dkr. 2700,00

6 nights dkr. 2500,00

5 nights dkr. 2300,00

Single room per night incl. breakfast dkr. 575,00

Double room per night incl. breakfast dkr. 675,00

Simply The Best 6 Reasons Why

- Tournament-World Records & Tournaments
- Premium - Unchanged for 40 years
- Monster - Nothing Stronger
- Ghost - Invisable to fish
- Backcountry - Add 20 yards to your cast
- Flurocarbon - New pink

ANDE strongly supports proper conservation and fishermen the world over who have put their trust in our line for over 55 years.

ANDE, "The Line of Champions!"

Like Us on



The Line of Champions

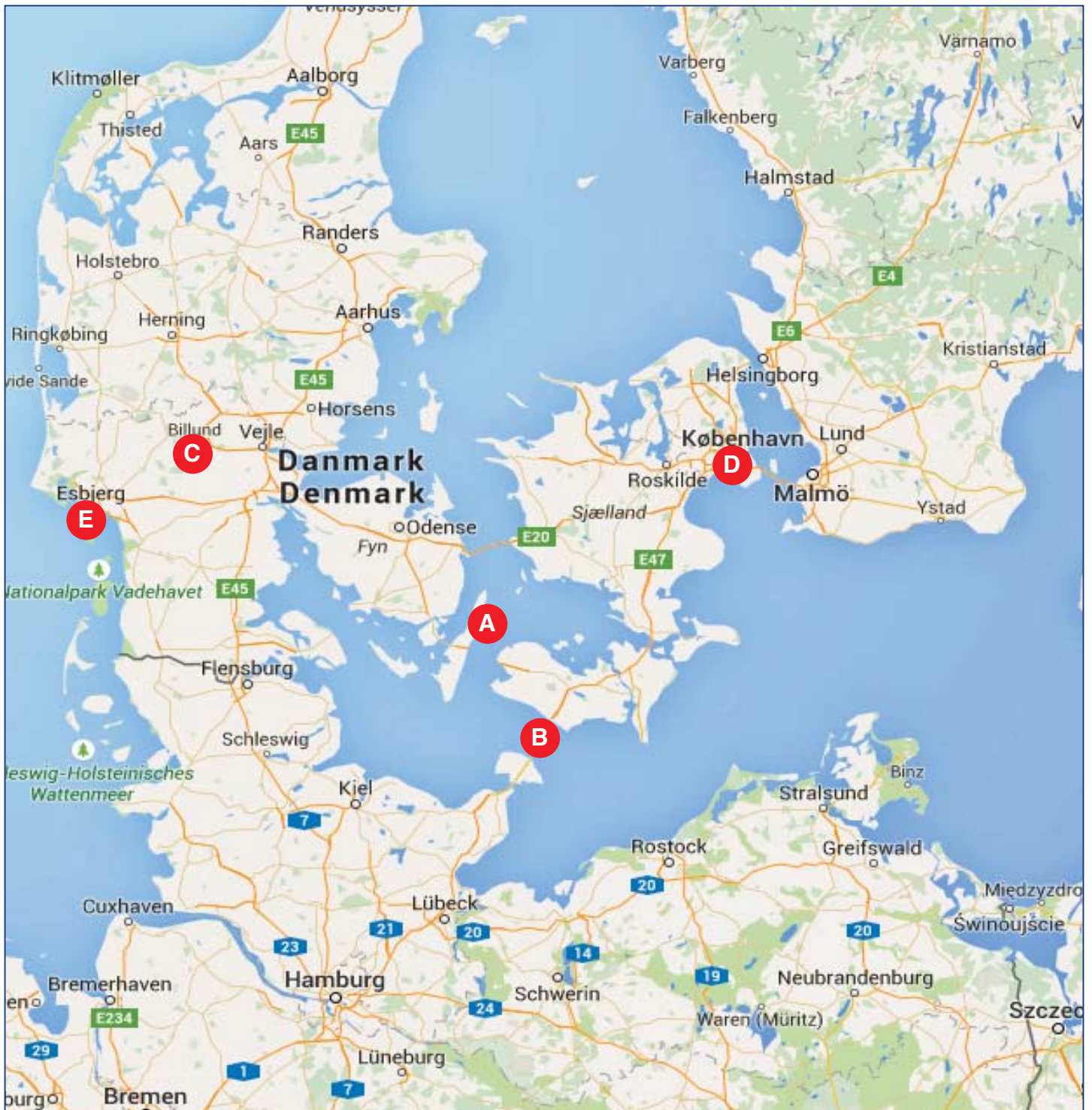
ANDE
MONOFILAMENT



5409 Australian Ave., West Palm Beach, FL 33407

561.842.2474 Fax: 561.348.5538

E-mail: andeline@bellsouth.net Website: andemonofilament.com



A Langeland **B** Rødby / Puttgarden **C** Billund **D** Kopenhagen **E** Esbjerg

Getting to Langeland

Car: Hamburg - Flensburg - Kolding - Odense - Svendborg – Langeland

Car / Ferry: Hamburg - Puttgarden - Rødby - Tårs - Spodsbjerg - Langeland

By plane: Kopenhagen or Billund

Esbjerg: Ferry Crossing to Esbjerg, Denmark from Harwich and then further by car Kolding - Odense - Svendborg - Langeland



Langeland is a Danish island located between the Great Belt and Bay of Kiel. The island measures 285 km² (c. 110 square miles), and has a population of roughly 15,000. The island produces grain and is known as a recreational area. A bridge connects it to Tåsinge via Siø - a small island with a population of approx. 20 - and the main island of Fyn(to the northwest). Also there are connections by car ferry to the islands of Lolland, Ærø and Strynø.

The famous physicist and chemist Hans Christian Ørsted was born in Rudkøbing - the largest city on Langeland.

Administratively, the island is also a municipality (Langeland municipality).

KRANKHEIT/UNFALL ILLNESS/ACCIDENT

Notdienst / Emergency	112
Rettungsdienst / Salvage Corps	70 10 20 30

ÄRZTE / DOCTORS

Nach / After kl.16.00	70 11 07 07
Lægerne Ørstedsgade 4, Rudkøbing	62 51 51 41
Lars K. Johansen, Havnegade 18,Rudkøbing	62 51 30 00
Fredensvej Lægerne, Fredensvej, Rudkøbing	62 51 12 71
Lægehuset Rudkøbing, Engdraget 7 B	63 51 17 00

ZAHNÄRZTE / DENTISTS

Klinikhuset Klitgård, Rudkøbing	62 51 20 40
Ellehammer/Tolbod, Rudkøbing	62 51 19 44
H. Fornitz, Humble	62 57 10 20

APOTHEKE / PHARMACY

Rudkøbing, Brogade 15	62 51 10 02
Humble, Hovedgaden 2	62 57 10 55

POLIZEI / POLICE

Fredensvej 1, Rudkøbing	114
Geöffnet/Open:	
Mon/Mon	12.00-14.00
Don/Thurs	15.00-17.00

POSTAMT / POST OFFICE

Ahlefeldstgade 5, Rudkøbing	80 20 70 30
Østergade 2 A, Bagenkop	80 20 70 30
Langegade 5, Lindelse	80 20 70 30
Annexstræde 1A, Tullebølle	80 20 70 30
Vandværksvej 19, Snøde	80 20 70 30
Østergade 80, Lohals	80 20 70 30

DEFIBRILLATOR

Bei Notruf/By emergency call 112 / 114

TURIST INFORMATION

Torvet 5, Rudkøbing	62 51 35 05
Geöffnet/Open:	
Mon-Tors/Mon-Thurs	9.30-16.30
Frei/Fri	9.30-16.00