



CLUBE NAVAL  
DE PONTA DELGADA

*O Primeiro*

**EFSA EUROPEAN GAME  
FISHING CHAMPIONSHIP**



**EFSA**  
PORTUGAL



ACORES



**EUROPEAN GAME CHAMPIONSHIPS**

**TUNA – BILLFISH**

**SEPTEMBER 14<sup>th</sup> – 20<sup>th</sup> 2018**

**AZORES**

**S.MIGUEL – PONTA DELGADA**

# **RULES OF THE COMPETITION**

## **GENERAL PROVISIONS**

### **1 - OFFICIAL LANGUAGES**

- \* (A) The official language is Portuguese
- \* (B) The second official language is English.

### **2 - OFFICIAL HEADQUARTERS OF THE CHAMPIONSHIP**

\*The official Headquarters of the Championship is located in the Naval Club Ponta Delgada – <http://www.cnpdl.pt/biggamefishing>

### **3 - CAPTAINS MEETING, TEAM REGISTRATION AND CHECK-IN**

- ❖ Registration and Check-in are carried out at the secretariat of the Naval Club of Ponta Delgada;
- ❖ The Captains meeting will be held the day before the first day of competition (see Program);
- ❖ The presence of the Captain or his representative is essential. Their absence implies the automatic acceptance of all aspects or any specific regulatory changes decided upon at the meeting;
- ❖ All teams participate in the boat raffle and fish in different boats on each day of the Championship. The lack of any team in the raffle implies acceptance and agreement to be bound by all instructions and / or changes in rules made orally and decided and recorded during the meeting;
- ❖ The Organization shall provide all necessary information and clarifications and shall provide each team with a folder containing documents related to the event.

#### **THE FOLDER CONTAINS**

- EFSA REGULATION
- COMPETITION PROGRAM
- COMPETITION PROGRAM FOR EACH FISHING DAY
- TEAM REGISTRATION-YOUR CONSTITUTION-DAILY CHANGES IF CHECKED
- DAILY CATCH REGISTRATION
- CODE OF THE DAY
- PLACE OF DEPARTURE AND ARRIVAL
- FISH CHECK IN LOCATION
- PROTEST FORM

### **4 - REGISTRATION and DEADLINES**

- ❖ Registration ends on **July 14, 2018**, or earlier if a maximum of 12 (twelve) correctly registered teams are verified.
- ❖ Teams that register before **31.03.2018** will receive a **15%** discount on the registration fee, which will be refunded during the Championship.
- ❖ The registration fee is **€ 600,00** per team (2 to 4 anglers)
  - Additional angler (maximum 2 additional per team) is **€150,00** per angler.
  - The cost of renting the boat is **€ 3.000,00**
- ❖ The cost a hotel room for 6 nights is:
  - Single room € 600,00 // Double/Twin room € 700,00
  - Every extra night is: Single € 80,00 // Double/Twin € 85,00

#### **ESCORTS**

- 1 escort in Single room € 80,00 per night
- 2 escorts in double/twin room € 85,00 per night.

\* In the inscription is included the breakfast, welcome cocktail and the end of each day of proof, the tourism of 2 (two) days and dinner of the award ceremony.

\* Payment of registration of the team and accommodation must be made in full at the time of submission of the application form.

\* The confirmation of registration and payment must be sent to the email: - [carloscostapalhinha@sapo.pt](mailto:carloscostapalhinha@sapo.pt) , Carlos Palhinha, Director of EFSA Portugal, Official Director for the Big Game Championship.

## **5 - TEAM REQUIREMENTS**

- ❖ Each EFSA section can only register two national teams (team A and team B);
- ❖ Each team consists of 2 (two) to 4 (four) anglers. Individual angler may only fish in a team where there are already 3 (three) anglers;
- ❖ Only teams that are fully staffed by EFSA members (even from different sections) can participate in the EFSA European Big Game Championship, but will have to mention which EFSA section they represent;
- ❖ Elements of each team may be replaced as long as EFSA's GCC is previously informed;
- ❖ The skippers or masters of the contracted boats can not be registered as anglers of the teams participating in the Championship;
- ❖ Participating EFSA sections should bring the national flag of the country they represent.

## **6 - FISHING REGULATIONS**

- \* A copy of the EFSA Regulation will be attached to the documents folder.
- \* It is the responsibility of each team to know and comply with the Rules of the Championship.
- \* Only fish caught on rod and line will earn points.
- \* Boats will be required to have 6 (six) rods and reels on board.
- \* It is the responsibility of each team to check the equipment on board the vessels: - the leaders, the hook and the fishing line before the beginning of the fishing in order to ensure that everything is in compliance and conform to the EFSA Regulation for Big Game.

## **7 - BOATS - DEPARTURE AND ARRIVAL**

- \* All boats must be tuned to **Channel 12** at the start line and at the finish line. The service station will be Radio Control operating at Porto de Abrigo.
- \* All teams will board and disembark at Marina Pierre de Teive in front of the Marina Atlántico hotel.
- \* All boats participating in the EFSA Big Game Championship 2018 must leave and arrive in order.
- \* The start and stop signal will be announced via radio (**channel 12**).
- \* In case a boat fails to be able to sail a replacement boat will be assigned for that day, but it is not possible to compensate for any loss of time. In case of a failed boat, EFSA GCC will try to replace it as soon as possible, but no extra time will be allowed.

## **8 - FISHING ACTION**

- \* On each day the teams must fill in the Daily Catch Registration contained in the folder delivered. The Daily Catch Registration must be signed by all anglers fishing on the boat that day and by the Captain, whether or not there are fish caught. Without registration there are no points.
- \* At the end of each fishing day, the camcorder, computer camera connections, Daily Catch Registration, terminal equipment and all capturing images must be submitted to the EFSA GCC for official verification of the total points. Failure to submit the above shall indicate disqualification of the day's catch.
- \* All teams must return the Daily Catch Registration, the video of the fish caught until **7:15 pm** or the catches will be disqualified. The only exception will be if the ship had some mechanical difficulty.
- \* In the event that a fish is still being fought when the fishing stop signal is issued (**18H00**), angler can continue the fight for **another 60 minutes**, however informing the Port of Abrigo (Radio Control) or the fish will be disqualified. There will be no more exceptions.
- \* If in a championship sleeve a fish is caught and released and corresponding to the eligible species in the tournament, but without the minimum limits of size or weight, then they will be scored with the minimum eligible weight in the release table.

## **9 - FORM OF FISHING and CATCH OF THE CHAMPIONSHIP**

- \* All fishing will be trolling and will take place in three (3) sessions on different days.
- \* The event is open to the following species:

Blue Marlin	<i>Makaira nigricans</i>
White Marlin	<i>Tetrapturus albidus</i>
Swordfish	<i>Xiphias gladius</i>
Longbill Spearfish	<i>Tetrapturus pfluegeri</i>
Roundscale Spearfish	<i>Tetrapturus georgi</i>
Bluefin Tuna	<i>Thunnus thynnus</i>
Bigeye Tuna	<i>Thunnus obesus</i>

Yellowfin Tuna	<i>Thunnus albacares</i>
Albacore Tuna	<i>Thunnus alalunga</i>
Skipjack Tuna	<i>Katsuwonus pelamis</i>
Dolphinfish	<i>Coryphaena equiselis / hippurs</i>
Wahoo	<i>Acanthocybium solandri</i>
Mako Shark	<i>Isurus oxyrinchus</i>

\* The fish mentioned above shall be accepted for classification and the score shall meet the conditions set out in the table **in point 15.**

\* **Clarification for the following points:**

- (A) - The main line can not be more than 130 Lbs (60 kg).
- (B) - All fishing will be in trolling (Big Game Fishing) using artificial samples  
**(the use of any natural bait, dead or alive, is not permitted)**

\* Lures type artificial baits, such as RAPALAS, can be used and may have double or triple hooks installed.

\* SQUID type baits (SKIRTS) can be equipped with single or double hooks.

\* The Organization reserves the right to verify any capture by requesting the viewing of the equipment used in the capture in order to confirm that it is in compliance with the EFSA rules. The refusal implies disqualification of the team in question (see paragraph 20).

## **10 - OBSERVER / PHOTOGRAPHERS**

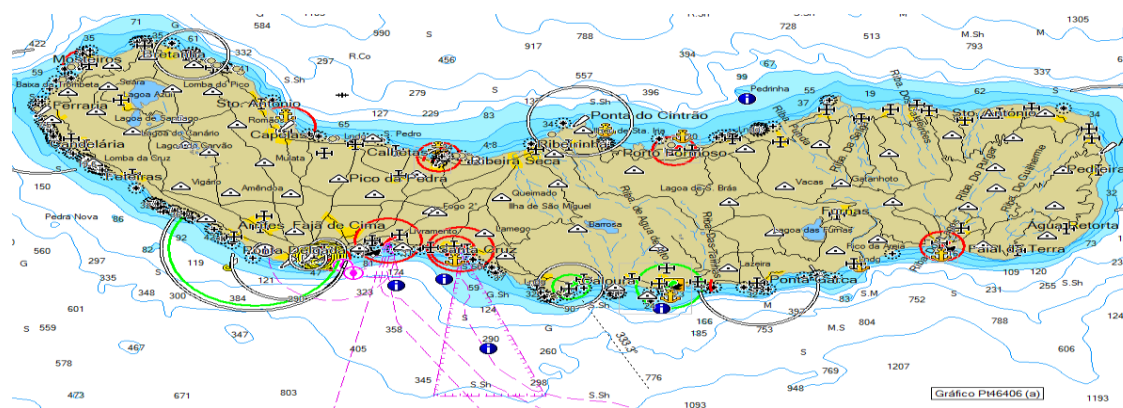
\* The EFSA GCC, in its sole discretion, may assign an observer or photographer / cameraman or guests to any boat on any fishing day. If an observer, photographer or guest is appointed the boat is held responsible for its comfort and safety.

\* Observers shall not determine the official catch or release of fish.

## **11 - FISHING AREA LOCATIONS**

\* There are no limits of area where fishing can be carried out.

\* Boats must obviously fish within the areas for which they are licensed.



## **12 - CHAMPIONSHIP COMMITTEE**

\* The GCC Committee consists of two EFSA HP Directors, two EFSA Portugal Directors and one representative of the Ponta Delgada Naval Club.

\* EFSA GCC has the right to investigate any doubt about the Championship and will decide on any protest, penalties, disqualification, breaking rules, safety problems, weather conditions and any other problems arising from the Championship.

\* The EFSA GCC also has the right to investigate and act on any incident during the Championship. You have the right to disqualify any catch after the examination and the measurement of equipment and equipment used on the ship. EFSA GCC has the right to examine any catch, hooks, line and / or leader at any time during the tournament. Any team or angler who deliberately breaks the rules of the Rules or refuses EFSA GCC to examine any catch, line and / or leader will be immediately disqualified and kicked out of the tournament without any refund including entry fee (see paragraph 20).

### **13 - OBLIGATIONS / COMMUNICATIONS**

- \* It is the responsibility of the teams to know the rules of EFSA and apply them as set out in this Regulation
- \* The frequency for reporting catches shall be **channel 16**. The frequency for general communications shall be **channel 12**.
- \* The Report required via VHF is to report all catches indicating the area where they were made, (geographical coordinates position), species and quantities.
- \* They should also report the name of the team in action (start time of the fight), the name of the angler who fights the fish and the end of the fight.
- \* The capture of a fish will be indicated with the display of the corresponding flag.
- \* It is mandatory to submit to GCC the catch certificate completed and signed by the captain of the team and the video record of identification, showing the capture of the fish.
- \* If a boat is unable for any reason to communicate with the Radio Control Operator one of the above items must be retransmitted via radio or cellular or otherwise to another boat. Capture / release and numbers and times will be recorded at the same time that the event is reported to the Radio Control Operator, even for previous captures. Without exception.
- \* The intentional refusal to report any fishing event to the Radio Control Operator will result in disqualification (see paragraph 20).

### **14 - VIDEO RECORDS**

- \* Fish catches will only be validated by the GCC after viewing the fishing video:
  - (A) - Video recording with date and time.
  - (B) - Video recording since the beginning of the fight.
- \* The video recording should show the angler who fights with the fish and the leader winding through the top rod ring. The recording should also show the moment of release.
  - Clear species identification;
  - Show capture or the full release of the fish;
  - Video recording where a team member and / or crew member is visible on the wind-on-leader or leader;
  - The video must be continuous, without interruption to the recording, and identify all these elements;
  - Do not exclude any recording made during fishing hours, even if it does not include the above elements and is not used to prove a catch. After any capture, the catch number, the official capture time and the time of release, the name of the species and the angler must be reported in the Daily Catch Registration;
  - If for any reason it is not possible to clearly identify the fish caught and released, the team will receive the minimum score for a fish released (**100 points**).
- (C) - breach of point (A) will invalidate the catch.
- (D) - All rights in the videos and photos delivered to the Organization are owned by the same.
- \* The equipment of the camera (VIDEO) must be the equipment of the team and not of the boats.
- \* The equipment must be compatible with the equipment of the organization. (the teams must have the connection cables compatible with the equipment of the Organization, PAL / EUROPA).
- \* The camera equipment must have an empty memory card at the beginning of the competition.

### **15 - CLASSIFICATION and SCORE**

- \* The fish score must meet the conditions mentioned in the tables below.
- \* The final ranking for teams will be established by adding the total score of the fish.
- \* The following scores will be applied:

#### **SCORING TABLE** **BILLFISH**

COMMON NAME	POINTS FOR RELEASE
<b>Blue Marlin</b> <i>(Nakaira nigricans)</i>	<b>300</b>
<b>White Marlin</b> <i>(Tetrapturus albidus)</i>	<b>150</b>
<b>Longbill Spearfish</b> <i>(Tetrapturus pfluegeri)</i>	<b>100</b>
<b>Roundscale Spearfish</b> <i>(Tetrapturus georgi)</i>	<b>100</b>
<b>Swordfish</b> <i>(Xiphias gladius)</i>	<b>200</b>

TABLE FOR DEAD TUNAS

COMMON NAME	Points per kilo	Minimum Weight Kg
<b>Bluefin Tuna</b> ( <i>Thunus Thynus</i> )	<b>1</b>	<b>60 Kg</b>
<b>Bigeye Tuna</b> ( <i>Thunus obesus</i> )	<b>1</b>	<b>20 Kg</b>
<b>Yellowfin Tuna</b> ( <i>Thunus albacores</i> )	<b>1</b>	<b>20 Kg</b>
<b>Albacore Tuna</b> ( <i>Thunus Alalunga</i> )	<b>1</b>	<b>10 Kg</b>
<b>Skipjack Tuna</b> ( <i>Katsuwonus pelamis</i> )	<b>1</b>	<b>5 Kg</b>

TABLE OF OTHER DEAD SPECIES

COMMON NAME	Points per kilo	Minimum Weight Kg
<b>Dolphinfish</b> ( <i>Coryphaena equiselis</i> )	<b>1</b>	<b>5 Kg</b>
<b>Wahoo</b> ( <i>Acanthocybiun solandri</i> )	<b>1</b>	<b>15 Kg</b>
<b>Mako Shark</b> ( <i>Isurus oxyrinchus</i> )	<b>1</b>	<b>20 Kg</b>

\* Captured and killed beaked fish will be disqualified unless it is demonstrated by video that they could not have been returned to the water. The points shall be awarded in equivalence to the weight of the fish.

## 16 - WEIGHING

- \* The weigh-in will be carried on a team by team basis.
- \* Fish that have been weighed must be personally identified by the catching angler who made the capture, or if it is not able to do so, must be by the captain of the team. The fish must have an easily visible label.
- \* The Captain or his representative must be the only person to contact the GCC for the purpose of validating the catch.
- \* All fish caught and presented for weighing are owned by the Organization and may be distributed by IPSS

## 17 - FINAL CLASSIFICATION

\* The final classification will be calculated based on the total points awarded over the 3 (three) fishing days

## 18 - TIEBREAKER

\* In the event of a tie on points, the tie-breaker will be based on the following criteria:

- number of fish released;
- the first catch register;
- time of first officially registered catch;
- draw.

## 19 - PENALTIES

- \* Any team that arrives after the established time will be penalized with 10 (ten) points for every 15 (fifteen) minutes of delay.
- \* There will be no penalties for delays caused by the boat mechanical deficiency, provided that this deficiency is proven.

## 20 - DISQUALIFICATION

- \* As stated in paragraphs 9, 12 and 13 in its last paragraphs.
- \* For deliberate violations of the rules, lack of knowledge of the regulation and inappropriate behavior.

## **21 - PROTESTS**

- \* Teams may, through their Captain and addressed to the GCC, send a protest in writing and must be made within **30 (thirty) minutes** after the provisional announcement of the daily classifications and the overall final classification of the Championship.
- \* The protest must be made in a well-grounded manner in the following situations; in relation to the event (fishing action); in relation to the weighing and in relation to the classifications.
- \* The Protest must be accompanied by an amount of **€ 250.00** that will be returned if the protest is successful.
- \* The GCC will take a decision within a reasonable time, a decision that will be irrevocable.
- \* In the absence of objections, provisional classifications are immediately passed to definitive.

## **22 - LIST OF AWARDS**

- \* The list of awards will be presented at the captains' meeting on the 14th.
- \* At the closing ceremony of the awards, all participants must be properly dressed according to EFSA clothing standards. The clothing is composed by: - marine blazer with embroidered emblem of the EFSA section they represent; white shirt (short or long sleeve); necktie EFSA; gray trousers and socks and black shoes. Ladies participating in EFSA can replace pants with gray skirts and not wear a tie.
- \* However, the Organization may suggest not wearing the blazer and tie if you feel that wearing these parts can cause discomfort to participants if the temperature is high. At the appropriate time, the Organization shall inform of the application of its suggestion.

## **FINAL DISPOSITIONS**

- \* All teams must be properly insured.
  - \* The Organization in case of force majeure reserves the right to change the rules of the Regulations, the Program, the start and end times of each event, suspend or cancel the Championship at any time, provided that it concludes that there is bad weather or to understand that they may endanger the safety of boats, anglers and crew. The Organization shall immediately notify the team captains of their decisions.
  - \* The Organization reserves the right to refuse to register any team.
- =====
- =====